



Is your evaluation green?

An introduction to why environment matters in evaluation

Jeneen R Garcia
Senior Evaluation Officer
jgarcia2@thegef.org

04 DECEMBER 2025



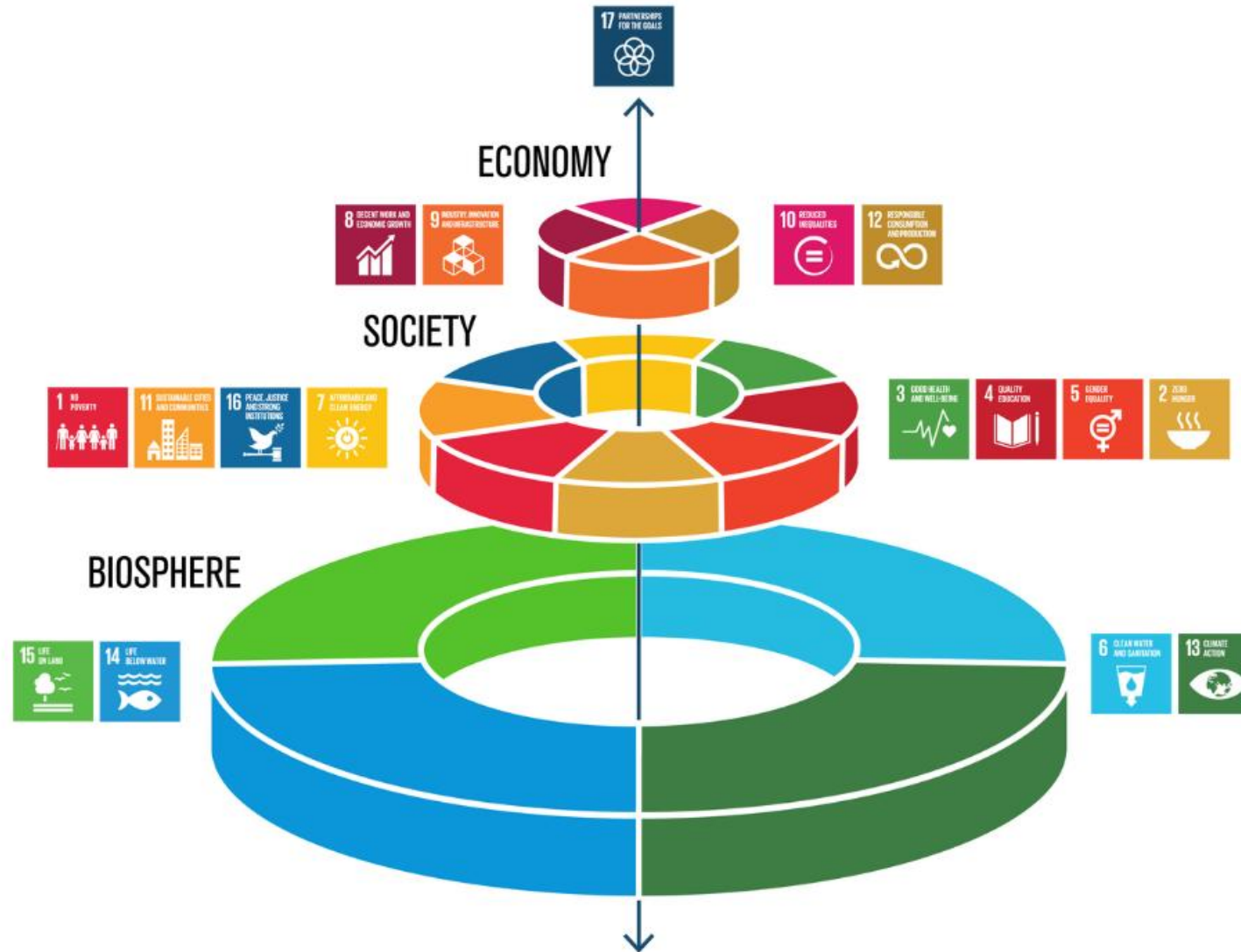


SUSTAINABLE DEVELOPMENT GOALS



**Which SDGs does your current work
contribute to?**

The SDG Wedding Cake Model



**How would your work be affected if the
Environmental SDGs are not met?**

Why assess environment?



Success and
sustainability of
intervention outcomes



Unintended (negative or
positive) effects on
other SDGs

Which interventions require assessing the environmental dimension?



Does the intervention...

- Include positive environmental outcomes as an objective?
- Depend on nature to be stable or predictable to succeed?
- Directly or indirectly involve the use of natural resources or ecologically important spaces and times?
- Produce substances, sounds or changes in temperature and other physical factors that may alter the environment (i.e. pollution)?
- Cover a large scale in terms of space and time?

BUT assume first that the environmental dimension needs to be assessed and **THEN** systematically determine if it is not necessary, through a systems-based theory of change

What is “environmental evaluation”?

- the assessment of a development intervention’s



...and their associated environmental changes

- NOT just about climate change or negative impacts of human activities

What makes it different?

“Environmental evaluation” looks at how HUMAN and NATURAL systems affect each other across space and time.

Some challenges to expect...

Causes and effects often occur in space and time beyond the intervention's scope

Multiple uses, stakeholders and disciplines

Environmental data may be harder to collect

Changes may occur at time scales far beyond the intervention period

...requiring a different set of tools

Causes and effects often occur in space and time beyond the intervention's scope

Multiple uses, stakeholders and disciplines

Environmental data may be harder to collect

Changes may occur at time scales far beyond the intervention period

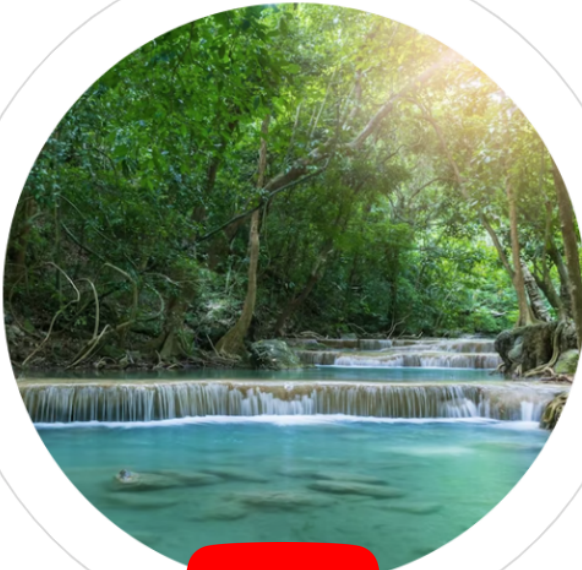
Systems-based Theory of Change

Geospatial Approaches and Methods

“Progress Toward Impact” Assessment

Modules

Key approaches and tools developed for evaluating the environmental dimensions of development interventions



1 Evaluating at the Nexus of Development and Environment

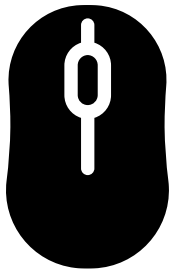
2 Using a Systems Lens to Expand a Theory of Change

3 Geospatial Approaches in Environmental Evaluation: An Introduction

4 Using Geospatial Approaches with other Methods to Assess Evaluation Criteria

5 Assessing Transformational Change and Progress Towards Impact

HOW TO ENROLL



<https://www.gefieo.org/en/knowledge-learning>